

Adlai Stevenson Elementary School Renovation and/or Addition

Temporary Inconvenience
Permanent Improvement

September 11, 2012

Pre-Decisional Discussion



2012-2013

Elementary Enrollment

- 1976 Elementary Students (9/4/12)
 - 3999 total enrollment
 - Lowest enrollment in more than 15 years
- Average class sizes
 - K-3 - 22.7 students
 - 4-6 - 22.8 students

Number of “Runs”

- Largest 2012-2013 Elementary class is **4th grade - 303** students
- Largest class K-12: Juniors - 350
- 12 runs 25 students per class
- 13 runs 23 students per class

Enrollment/Capacity

- Adlai - 354/496
- Center - 402/552
- Holiday Park - 450/552
- Pivik - 532/736
- Regency Park - 238/350
- Total - 1976/2686

According to
9/4/12 Data

Current Runs

- 4 New Pivik
 - 3 Center
 - 3 Holiday Park
 - 3 Adlai Stevenson
 - 2 Regency Park
- Need 13 “Runs”

- Most of the scenarios include closing Holiday Park and some include closing Regency Park
- All scenarios include redistricting
 - A Geographic Information System (GIS) will be used to maximize student placement efficiencies

Option I

Need 13
Runs

1 Run = 175
students

- Renovate Adlai Stevenson and Holiday Park as originally designed
- 3 & 3 runs (6 + RP + P + C = 15 runs)
- \$5.5 and \$6.5 million = \$12 million + Renovation of Regency Park

Option 2

- Renovate Adlai Stevenson and Holiday Park as originally designed
- 3 & 3 runs ($6 + P + C = 13$ runs)
- \$5.5 and \$6.5 million = \$12 million

Option 3

- “Pivik II” on Adlai Stevenson site
- 4 runs (4 + C + P + RP = 13 runs)
- \$17 million (includes demolition of existing Adlai) + Renovation of Regency Park
- Option 3.5
 - “Pivik II” 3 floors - 5 or 6 runs
 - \$17 million < X < \$23 million

Option 4

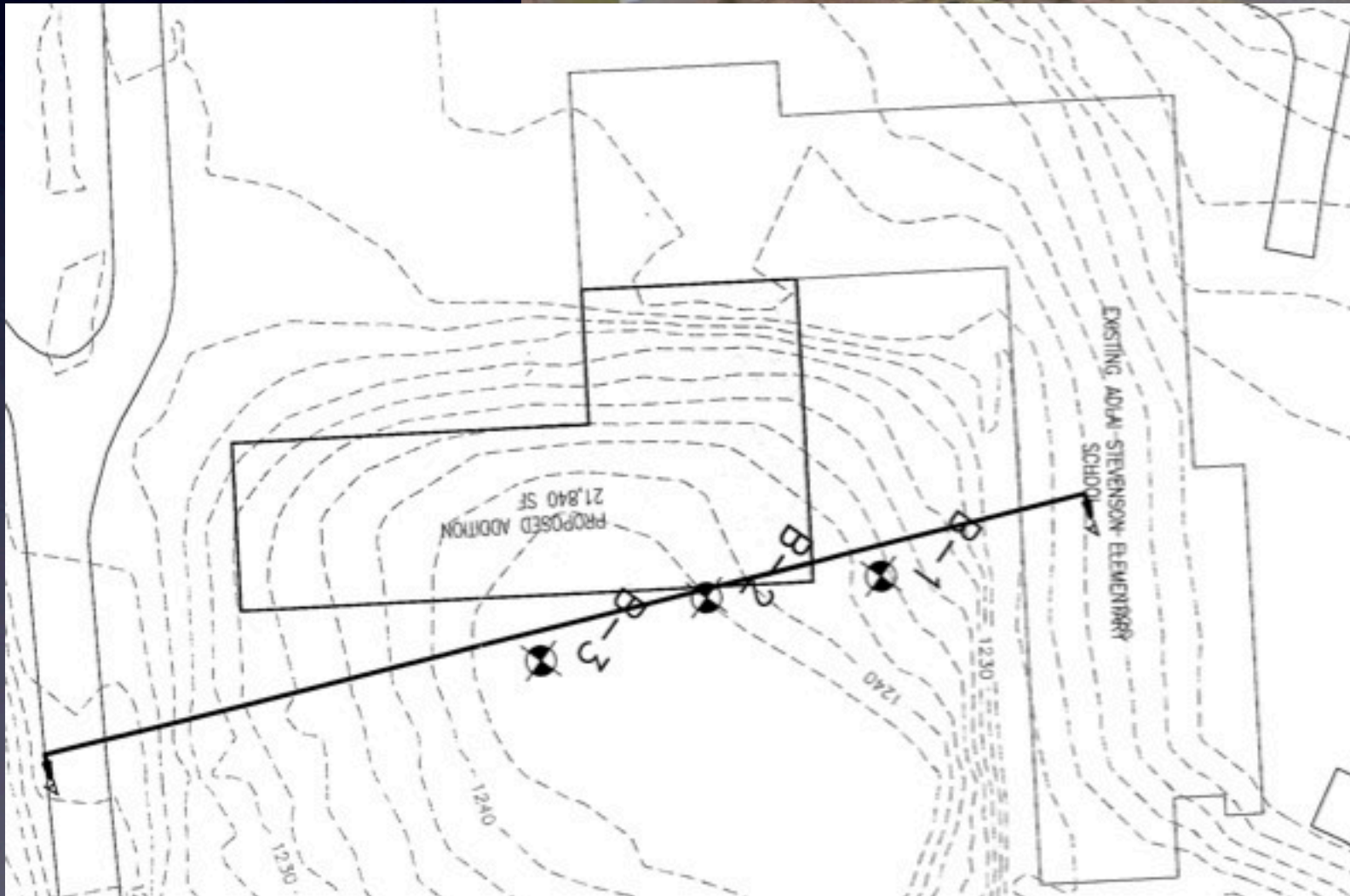


- Design new school on the Adlai Stevenson site
- 6 runs ($6 + P + C = 13$ runs)
 - 6 Runs = 1050 students
- \$23 million (includes demolition of existing Adlai)



Option 5

- Renovation of Adlai Stevenson with an addition
- 5 runs ($5 + C + RP + P = 13$ runs)
 - 5 Runs = 875 students
- \$11 million + Renovation of Regency Park
 - Walking Only School at RP (1 Run)



Option 6

- Renovation of Adlai Stevenson with an addition
- 6 runs ($6 + C + P = 13$ runs)
- \$15 million



Option 7

- Renovation of Adlai Stevenson with an addition & an addition at Center
- 5 runs at Adlai
- 2 additional runs at Center – total 5
- $5(A) + 5(C) + P = 14$ runs
- \$11 million + Addition at Center



Funding

- Remaining 2010 GOB - \$2.5 million est.
- Designated Fund - \$2.5 million
- Anticipated Refinancing - \$4.5 million est.
- New Bond Issuance - \$7.1 million est.
- Total - \$16.6 million

Demolition and Asbestos Abatement Estimates

- Pivik (100 School Road) \$850,000
- Adlai Stevenson \$550,000
- Holiday Park \$475,000
- Regency Park \$400,000





Construction

- **Design Team** – PA Soil and Rock
- **Owners Representative** – Russo Construction Management Services
- **Single Prime Contractor** – TBD

Timeline



- October 2012 - School Board Direction
- April 1, 2013 - Bids Advertised
- May 15, 2013 - Open Bids
- June 15, 2013 - Ground Breaking

Student placement during the 2013-2014 construction year

- **Option 1**

- Renovation Only

- Addition/renovation while students on site (2 year commitment)

- **Option 2**

- Adlai students move into Old Pivik

Student placement during the 2013-2014 construction year

- Option 3
- Operate without Adlai & Old Pivik
- Redistrict all elementary students
- Center, Holiday Park, Regency Park & New Pivik (12 runs available)

Questions/Concerns

- PlanCon - Adlai and Holiday Park in process at PDE
- Demolition or Sale of Buildings or Land
- 2013-2014 School Year
 - Redistricting
 - Staffing, transportation, impact on academics, etc...
- Operating cost reductions
- Other funding options for consideration